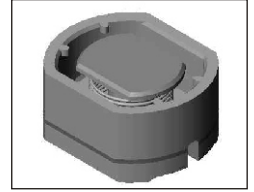


# SMT Power Inductor

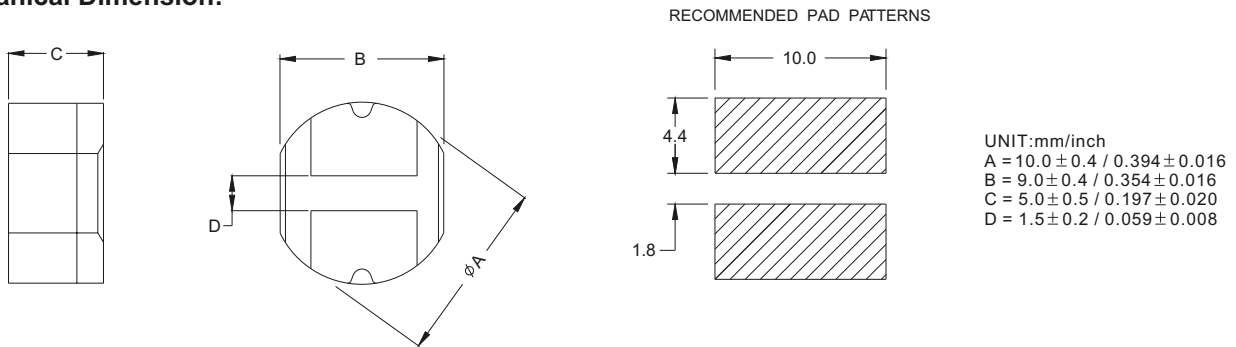
## SIR106 Type

### Features

- RoHS compliant.
- Low profile (5.5mm max. height) SMD type.
- Magnetically shielded.
- Self-leads, suitable for high density mounting.
- High energy storage and low DCR.
- Provided with embossed carrier tape packing.
- Ideal for power source circuits, DC-DC converter, DC-AC inverters inductor applications.
- In addition to the standard versions shown here, customized inductors are available to meet your exact requirements.

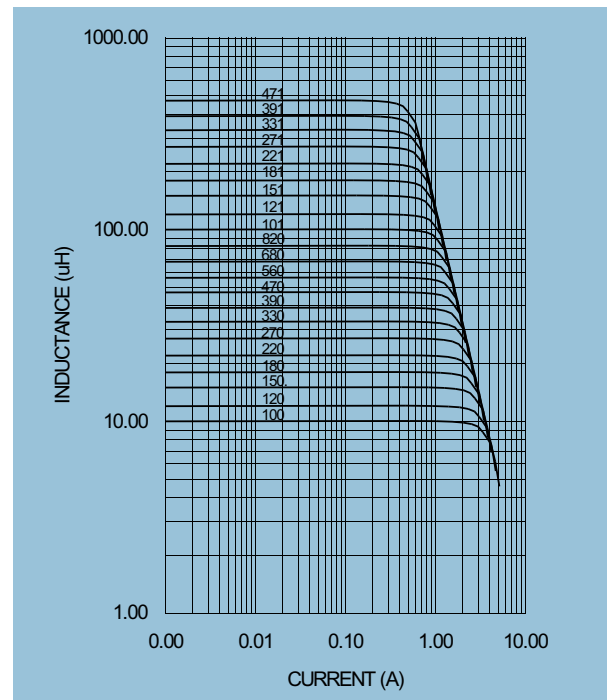


### Mechanical Dimension:



**Electrical Characteristics:** 25°C, 10~82uH 100KHz, 0.1V. 100~470uH 1KHz, 1V.

PART NO.	L <sup>1</sup> (uH)	DCR (Ω) MAX	I <sub>rated</sub> <sup>2</sup> (Adc)
SIR106 - 100	10	0.06	2.06
SIR106 - 120	12	0.07	1.94
SIR106 - 150	15	0.07	1.72
SIR106 - 180	18	0.08	1.58
SIR106 - 220	22	0.08	1.42
SIR106 - 270	27	0.10	1.32
SIR106 - 330	33	0.11	1.16
SIR106 - 390	39	0.12	1.10
SIR106 - 470	47	0.14	1.00
SIR106 - 560	56	0.19	0.93
SIR106 - 680	68	0.21	0.85
SIR106 - 820	82	0.28	0.79
SIR106 - 101	100	0.34	0.72
SIR106 - 121	120	0.37	0.63
SIR106 - 151	150	0.51	0.55
SIR106 - 181	180	0.57	0.50
SIR106 - 221	220	0.78	0.47
SIR106 - 271	270	0.87	0.41
SIR106 - 331	330	1.20	0.37
SIR106 - 391	390	1.34	0.35
SIR106 - 471	470	1.50	0.33



1. Tolerance of inductance: ±20% for 10~27uH, ±15% for 33~82uH, ±10% for 100~470.
2. I<sub>rated</sub> is the DC current which cause the inductance drop 10% typical of its nominal inductance without current and the surface temperature of the part increase less than 45°C.
3. Operating temperature : -20°C to 105°C (including self-temperature rise).



**DELTA ELECTRONICS, INC.**

(TAOYUAN PLANT CPBG) 252, SAN YING ROAD, KUEISAN INDUSTRIAL ZONE, TAOYUAN SHIEN, 333, TAIWAN, R.O.C.

TEL: 886-3-3591968; FAX: 886-3-3591991

<http://www.deltawww.com>